



# PAC Flow series

atlas copco.com



# We are driven by innovation

# 1

## Best in class performance

- Up to 82% pump efficiency at B.E.P. for more pumping with same required energy
- Reduced pump shaft speed for improved NPSHR and reduced wear of pump parts
- Up to 50cfm vacuum pump capacity to prime faster and get the job done quicker
- Unique enclosed impeller design with deflector vanes keeps Seal always clean and reduces wear for long lasting performance
- High fuel efficiency (FT4)



### Priming nearly twice as quick as PAS

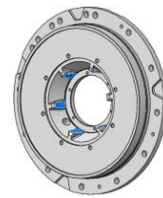
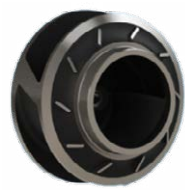
UNIQUE  
DEFLECTOR  
VANES



3 TIMES  
LONGER  
SEAL LIFE



UP TO  
82%  
EFFICIENCY  
AT B.E.P.



# We focus on creating partnerships

# 2

## A new level of Serviceability

- Service time reduction with the Atlas Copco SAIL Solution the revolutionary cartridge seal
- Bolted wear ring for fast replacement and no special tool requirement
- Patented swing door (except F1212) to access the pump within minutes
- Large doors to access all service points
- Fluid drain points for save and trouble free service

UNDER  
**60**  
MINUTES  
SERVICE TIME

**HINGE  
DOOR  
3 MIN**  
CLEAN-UP AND RESTART

UP TO  
**30%**  
REDUCED  
M.T.T.R.



**SAIL** Solution

# We deliver sustainable value

# 3

## Technology that creates a difference

- Two new pump controller solutions for efficient pumping and solving wide range of applications
- All Info a QR Code Scan Away! – Power Connect!
- Digitally connected - Fleetlink
- Cross-linked PE fuel cell – No oxidation inside the tank and safe for life

Rust free  
polyethylene  
fuel tank



Next  
generation  
pump  
controller



Power  
connect a  
scan away



## Mechanical Seal Patent and Trademark. Products - PAC H and PAC F.

**S** Semi Cartridge Seal **Serviceability**



**A** Adjustable Ring **Performance**



**I** Integrated oil bath **Lifespan**



**L** Leakage Detection Port **Safe and secured**



# PAC Flow series



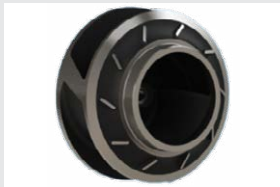
## HEAVY DUTY VACUUM PUMP

Provides high performance priming result with all media



## SUPERIOR SERVICEABILITY

Reduce M.T.T.R



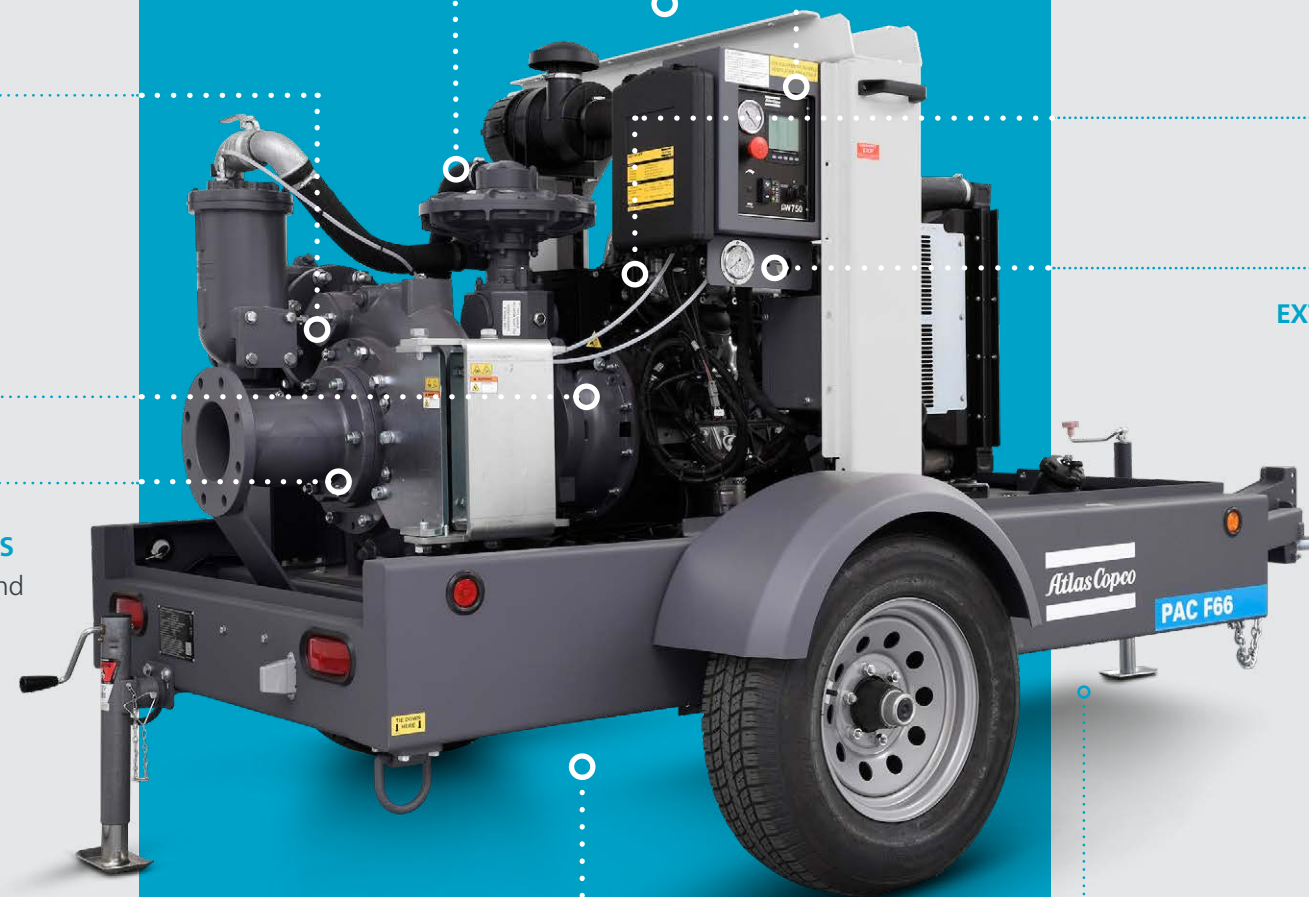
## UNIQUE IMPELLER DEFLECTOR VANES

Innovative design to extend Seal life and reduce wear



## EASY DRAIN ACCESS FOR PUMP

Easy access and maintenance



## INTEGRATED LIFTING HOOK / LUG

Simple access and safe lifting



## PW CONTROLLER SERIES

Efficient pumping in every application



## LINK BELT DESIGN

Quick maintenance



## EXTERNAL E-STOP AND PRESSURE GAUGES

Protected and always in control



## PE FUEL CELL

No tank oxidation and safe

UP TO  
**30%**  
REDUCED  
M.T.T.R.



**SAIL** Solution

**3 TIMES  
LONGER  
SEAL LIFE**



**NEXT  
GENERATION  
PUMP  
CONTROLLER**



**MAX  
FLOW** ⇒  ⇒  
UP TO **8,600** USgpm

**MAX  
HEAD UP  
TO 225 FT** ↑ 

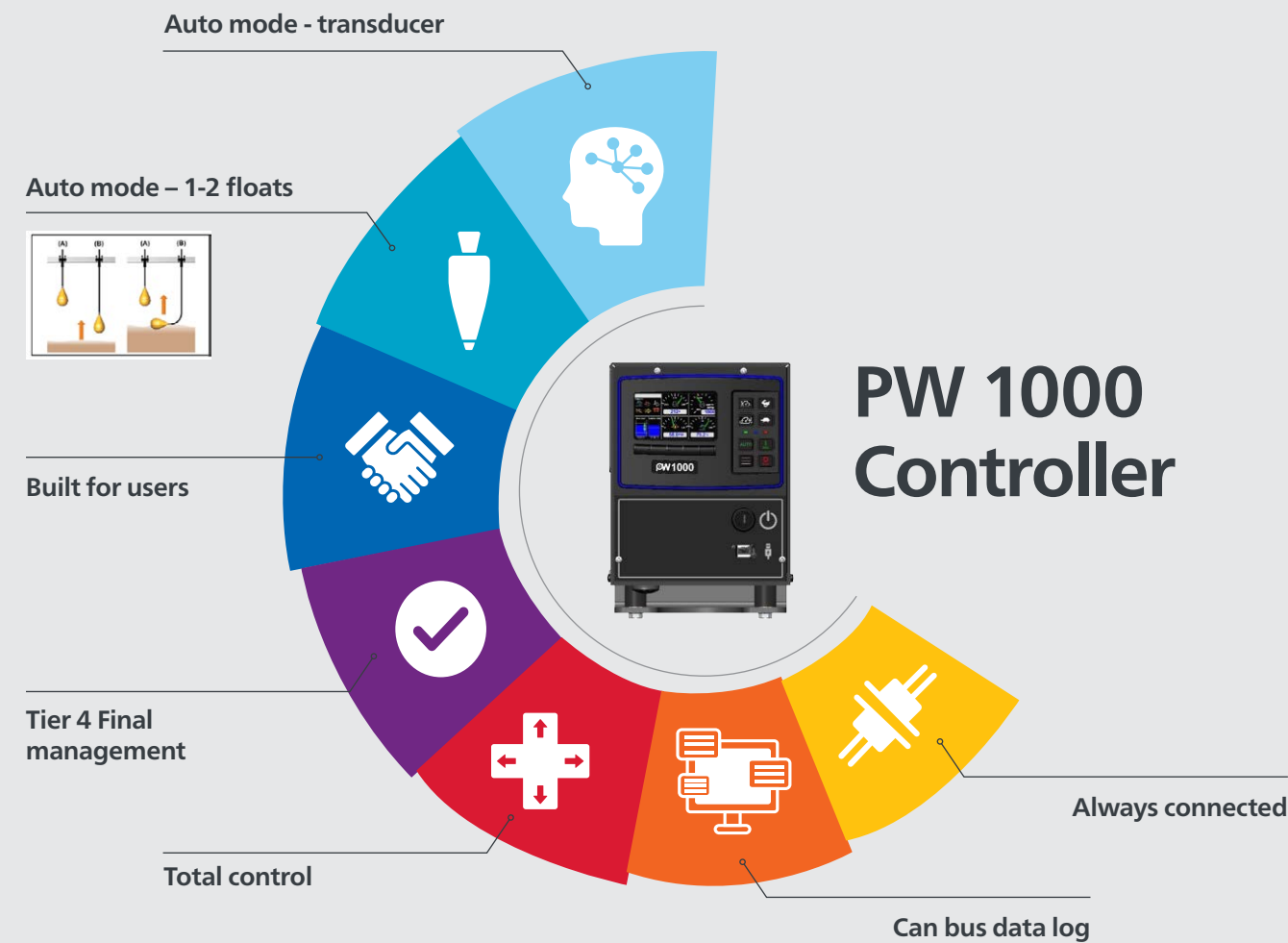
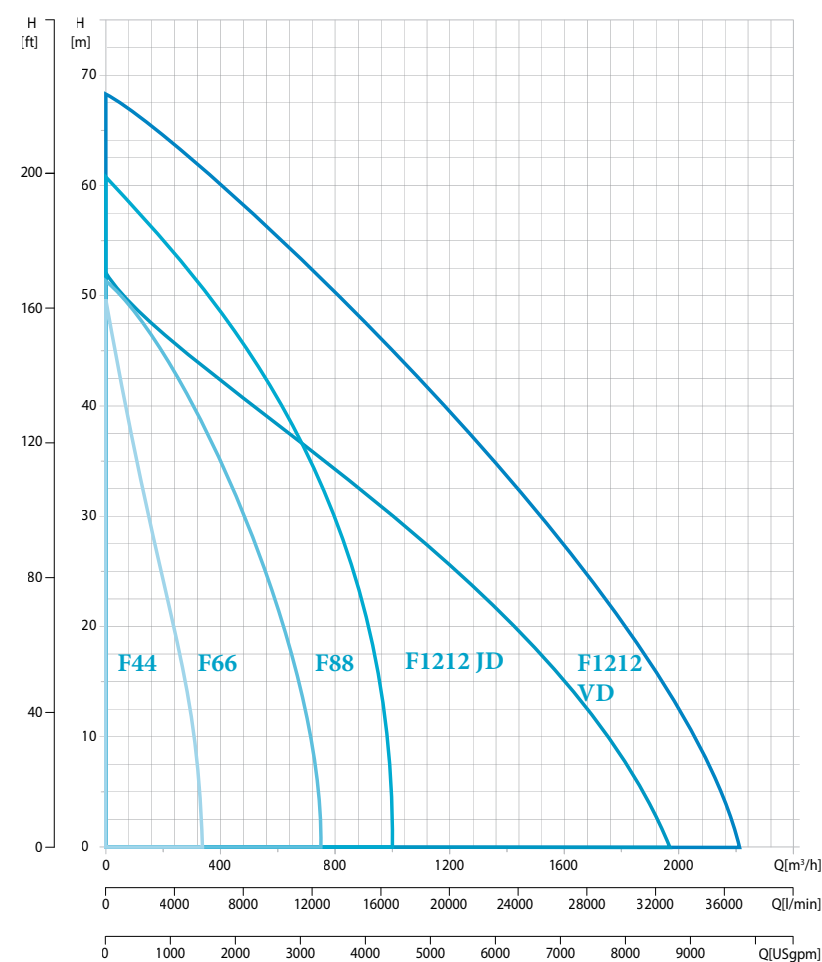


# PAC Flow series technical data

Specifications		PAC F44 KD(-S) 49HP	PAC F66 KD(-S) 74HP	PAC F88 PD(-S) 120HP	PAC F1212 JD-S 156HP	PAC F1212 VD(-S) 285HP
Max. head	ft	152	166	200	153	225
Max. capacity	Us gpm	1320	2,640	3,950	7,210	8,600
Suction flange size	in	4	6	8	12	12
Discharge flange size	in	4	6	8	12	12
Max. solids handling	in	3	3	3	3.5	3.5
Best efficiency point	%	72	79	82	74	74
Engine Make		KDI 1903TCR	Kohler KDI 2504 TCR	Perkins 904J-E36TA	John Deere 4045HFC06	Volvo TAD 872 VE
Emission compliance		FT4	FT4	FT4	FT4	FT4
Max. engine power	HP	49	74	120	156	285
Max. operating speed	rpm	2100	1800	2000	1900**	1600
Max. fuel autonomy	h	45	25.7	18.5	25.6	8.8
Weight and dimensions						
Weight (dry)	lbs	3152 (3730)	3,740 (4,020*)	4,530 (4,950*)	8,460*	8,160 (9,480*)
Weight (wet)	lbs	3782 (4360)	4,100 (4,650*)	5,200 (5,580*)	9,975*	9,260 (10,580*)
Length	in	157	157	165	149	128 (158*)
Width	in	78	78	76	82	76 (94*)
Height	in	74	74	80	89	85 (79*)

\* Silenced variant | \*\*Engine speed

## Operation area



## Controller

	PW1000
Manual	X
Auto start	X
Real time schedule start/stop	X
Autostart Features:	
Switches (floats)	2
4-20 mA transducers	6
Date/time	X
Flow meter (pulse or 4 - 20 mA)	Both
Switched inputs	8
Spare switched outputs	8
Modbus	Slave
USB programming/configuration	X
Built in CANbus trace tool	X
Display	high res 4.3" WQVGA color



### Highlights

- High-Res 4.3" WQVGA color display
- Powered by CANplus™RT software
- Simplified one-touch access
- Intuitive event manager

### Flexible Programming and Configuration

- Supports software updates and configuration changes via USB drive and complete access to all configurable parameters via display menu.
- Password protected multi-level menu access.

# Product portfolio

## GENERATORS

**PORTABLE**  
1.6-7 kVA



**MOBILE**  
25-1450 kVA



\*Multiple configurations available to produce power for any size application

## DEWATERING PUMPS

**ELECTRIC  
SUBMERSIBLE**  
up to 6,100 US gpm



**SURFACE PUMPS**  
up to 8,600 USgpm



Diesel and electric options available

## LIGHT TOWERS

**METAL HALIDE**



**LED**



## AIR COMPRESSORS AND HANDHELD TOOLS

**AIR COMPRESSORS**  
110-1,800 cfm  
58-508 psi



**HANDHELD TOOLS**  
Pneumatic  
Hydraulic  
Petrol engine driven



## ONLINE SOLUTIONS

**SHOP ONLINE  
PARTS ONLINE**

Find and order the spare parts for power equipment. We handle your orders 24 hours a day.



**POWER CONNECT**

Scan the QR code on your machine, and go to the QR Connect Portal to find all the information about your machine.



**LIGHT THE POWER  
YOUR SIZING TOOL**

A useful calculator to help you choose the best solution for your power and light needs



**FLEETLINK**

Intelligent telematics system that helps optimize fleet usage, reduce maintenance costs, ultimately saving time and cost.



**Atlas Copco**

Atlas Copco Power Technique  
atlascopco.com